

3 Field monitoring and veterinary services: The GPS, Global Protection Services

For poultry production managers, Global Protection Services allows proactive and data based decision thanks to a fast and regular monitoring of the health status and vaccine take of your flocks.



What is GPS?

After reviewing the quality of the vaccination in the hatchery, birds are sent to the farms, where they will be reared up to processing age. Addressing this critical period with the proper immunization program and a clear reduction of viral shedding, together with strict biosecurity measures and good management practices are the

only methods available to reduce performance losses and protect the animals from any disease challenge. To help you with the follow up of your vaccination program, Ceva has created a disease monitoring program called GPS (Global Protection Services). GPS is the natural continuation of C.H.I.C.K. Program.



How does it work?

The Ceva Veterinary Services teams have been trained to correctly sample and analyze flocks which take part into this monitoring program. The monitoring program basically consists of two different approaches:

1. Assessing the situation in the field and advising the customer before implementing a specific vaccination program;
2. Monitoring how the vaccination program addresses the needs of the producer by measuring the immune response, flock health and performance results.

GPS is currently used to first monitor the protection against Infectious Bronchitis, Newcastle and Infectious Bursal Disease all over the world under various circumstances and production requirements.

GPS allows to monitor flock health overtime and to propose quick corrective measures if the health and production benchmarks are not satisfactory. Based on customer data analysis, regular reporting and pulse meetings with the Ceva Teams, will support your business decisions and will give you a wider picture of what the animal health status is in your flocks.

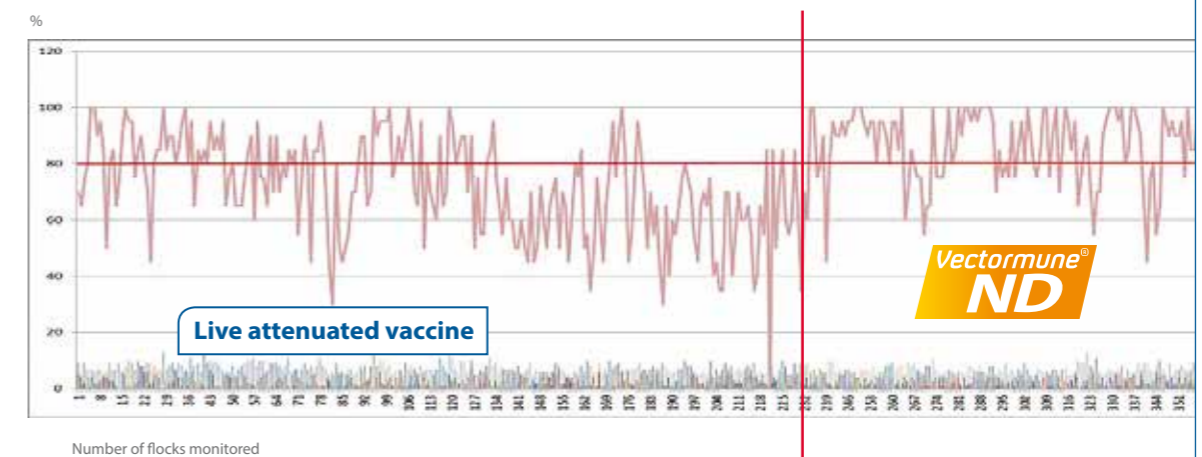
22000

Flocks monitored by GPS since 2014

180

Veterinarians in the field R&D and SSIU.

Serological data from GPS monitoring performed in 400 flocks. Percentage (%) of seropositive at slaughter and group titers (HI test).

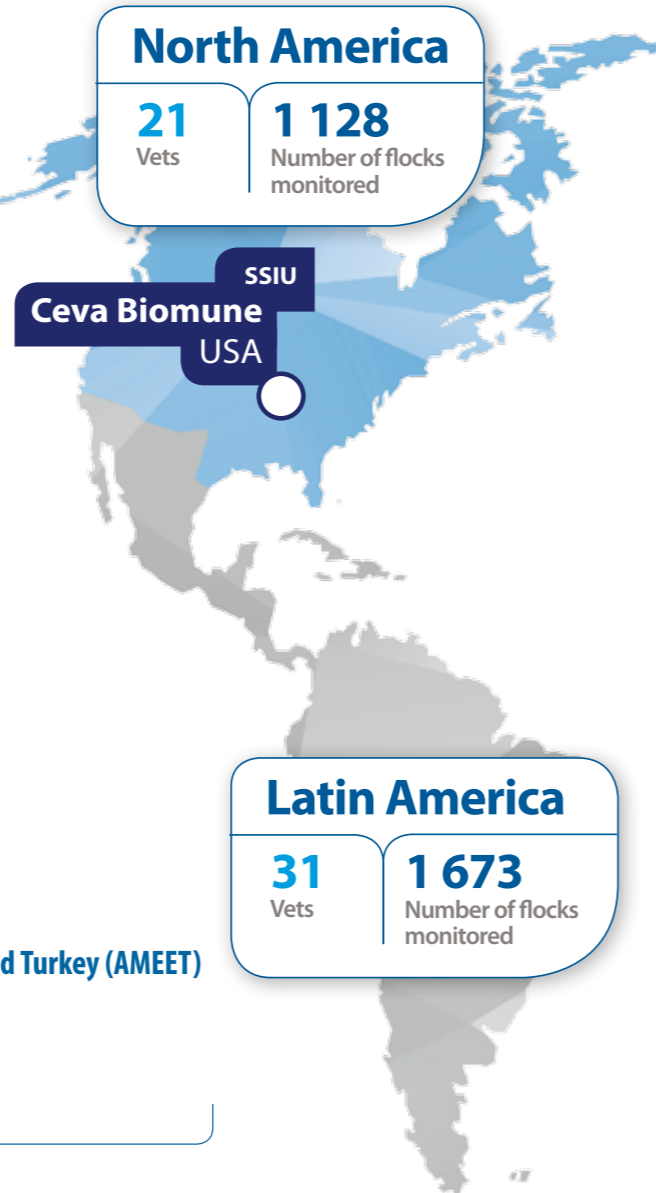


**Global Protection Services (GPS),
Monitoring to reach Veterinary services
excellence**

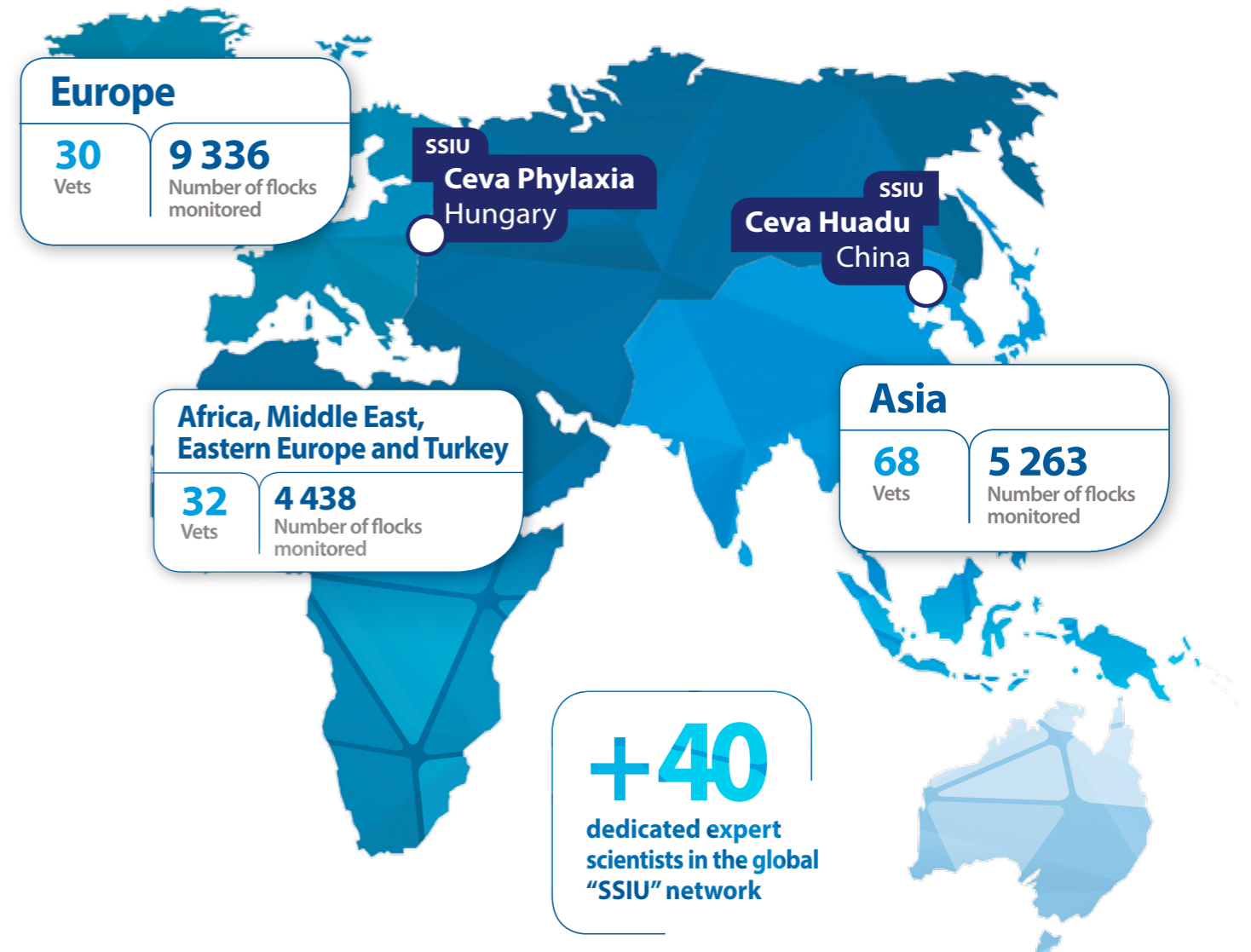


Ceva's Veterinary services is a multidisciplinary team of poultry veterinarians where each member has extensive expertise proven excellence in poultry health and farm management. Whenever help is required in the production chain, hatcheries, farms or slaughterhouses, the Ceva Veterinary Services Group is there to support your teams.

Across the globe, a team of more than 180 people with very diverse expertise and background are always available to help you make the right decisions to optimise performance providing customised services.



Global map showing the regions with veterinary services teams and the number of flocks monitored with GPS per region (2014-2017)



- North America and Pacific (NAPAC)
- Latin America (LATAM)
- Europe (EU)
- Africa, Middle East, Eastern Europe and Turkey (AMEET)
- Asia
- SSIU: Scientific Support & Investigation Units.